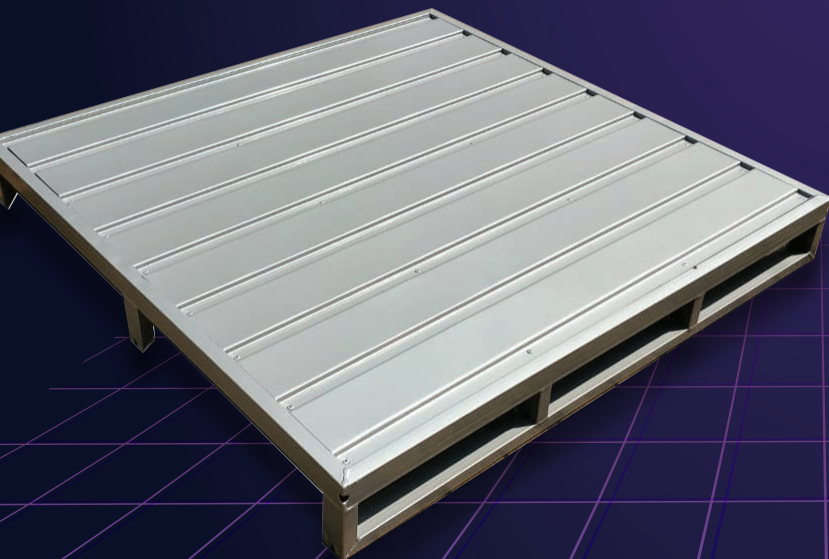
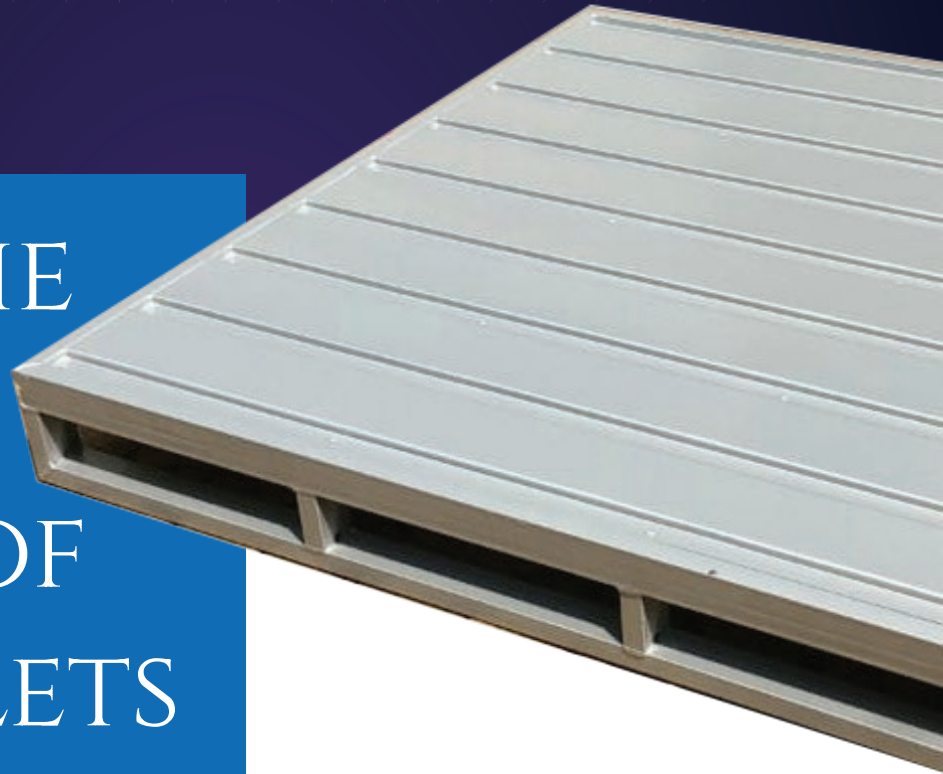




# STEEL WORKS EXPERT

## WE ARE THE LEADING SUPPLIER OF STEEL PALLETS

*Steel Works Expert Pallets  
Established in 2010 at East  
Toronto Ontario, Canada, has  
earned a reputation as a premier  
supplier of Steel Pallets.*



### CONTACT US:

*Phone: +1-416-835-3444  
+1-204-361-6015  
+1(647)895-2725*

*Email: [info@steelworksexpert.com](mailto:info@steelworksexpert.com)*

#### *Steel Pallets Inc.*

##### *Office address:*

*379 Stephen Street Morden Manitoba R6N  
0G8 Canada*

##### *Factory Address:*

*#420 9th Street south Morden Manitoba R6M  
0C3 Canada*

*[www.steelworksexpert.com](http://www.steelworksexpert.com)*

*Product  
Details*

STEEL WORKS EXPERT

*Foldable*

*Stackable*

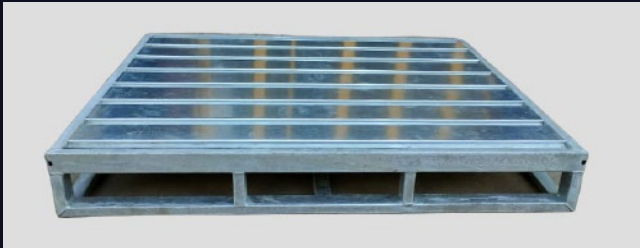
*Customized*

*Recyclable Easy  
storage*

# ABOUT US

*Steel works Expert Established in 2010 at East Toronto Ontario, Canada, has earned a reputation as a premier supplier of Steel Pallets. the products are tested to international standards. Our team uses best practices and required quality standards to meet customer performance expectations. Every product is thoroughly tested before shipment to guarantee continuous quality.*

# STEEL PALLETS



## *Galvanized Steel Pallets 40x48"*

*Pallet Size: 40x48"*

*Pallet Weight: 50lbs*

*Frontal Forklift Clearance: 4"*

*Sideways Forklift Clearance: 3.2"*

*Number of Topdecks: 7*

*Gap between Topdecks: approx. 3.3"*

*Static load capacity: 6000lbs*

*Dynamic load capacity: 2000lbs*

*Rack loading capacity: 2000lbs*



*Pallet Size: 40x48"*

*Pallet Weight: 55.5lbs*

*Frontal Forklift Clearance: 4"*

*Sideways Forklift Clearance: 3.2"*

*Number of Topdecks: 9*

*Gap between Topdecks: approx. 1.5"*

*Static load capacity: 6600lbs*

*Dynamic load capacity: 2200lbs*

*Rack loading capacity: 2200lbs*



# STEEL PALLETS

Pallet Size: 40x48"

Pallet Weight: 61lbs

Frontal Forklift Clearance: 4"

Sideways Forklift Clearance: 3.2"

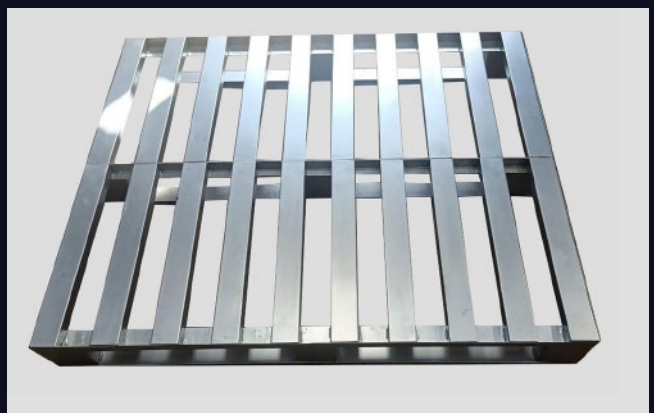
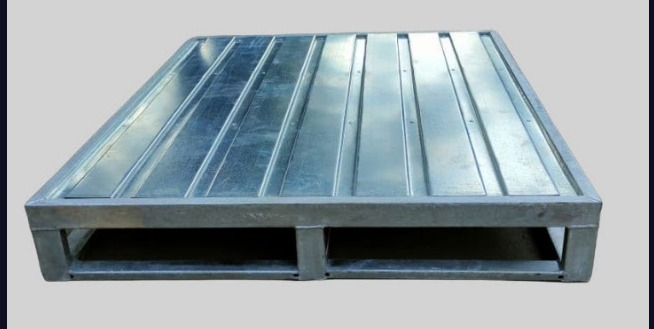
Number of Topdecks: 11

Gap between Topdecks: approx. 0.4"

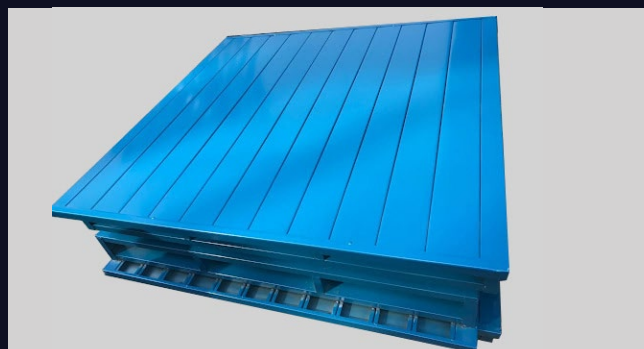
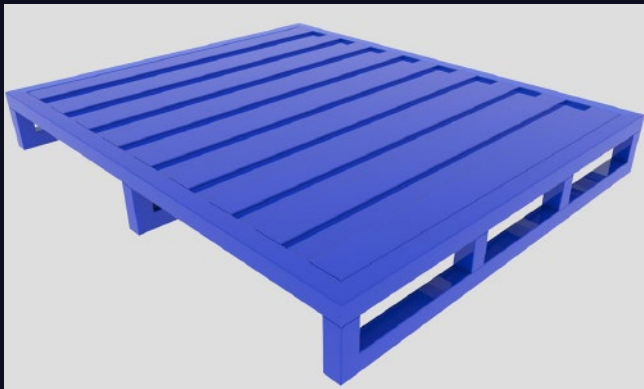
Static load capacity: 7200lbs

Dynamic load capacity: 2400lbs

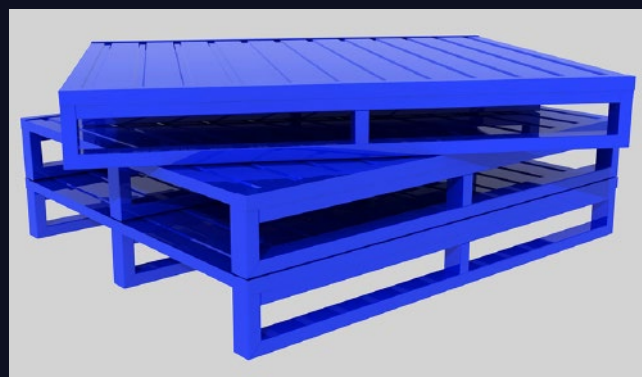
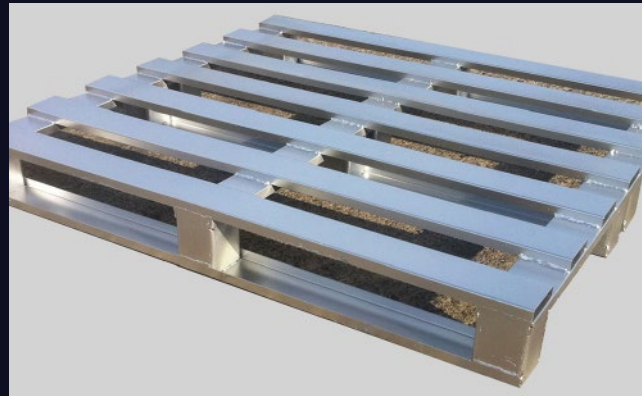
Rack loading capacity: 2400lbs



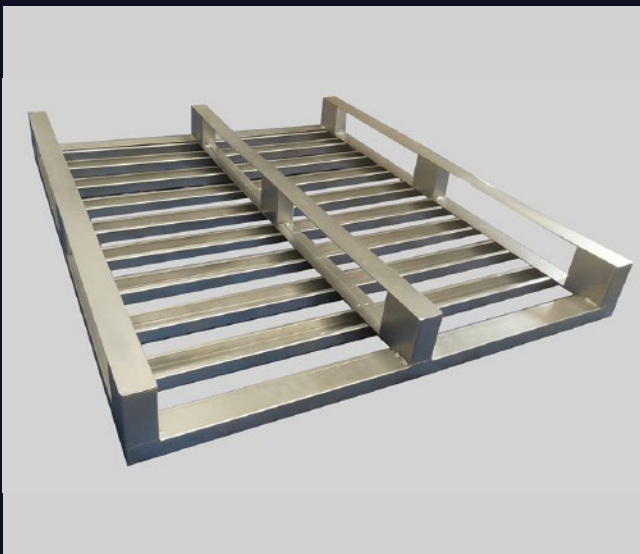
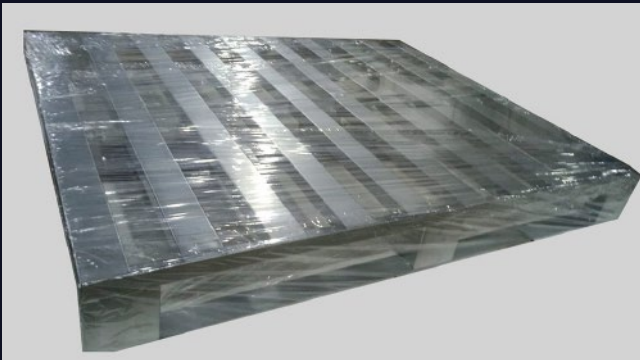
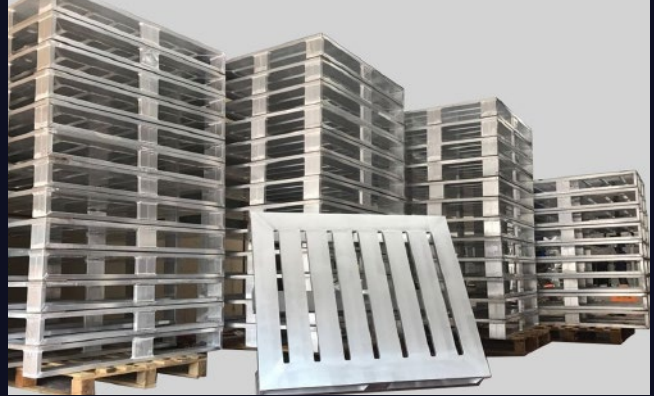
# STEEL PALLETS



# STEEL PALLETS



# STEEL PALLETS





# STEEL PALLETS



*Galvanized Heavy Duty Pallets 66×66 15T*



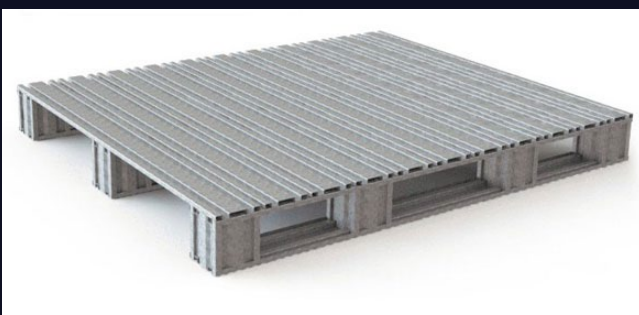
*Galvanized Lite Pallets 42×42 9T*



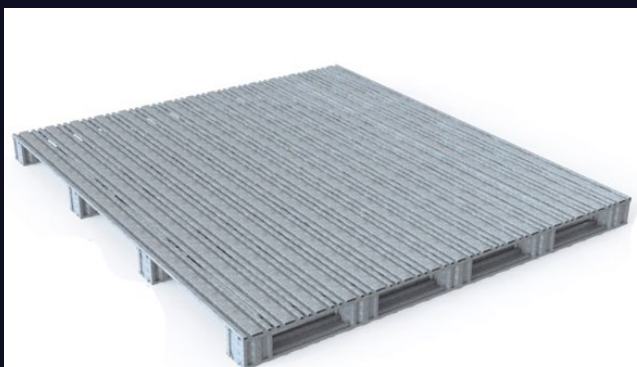
*Galvanized Heavy Duty Pallets 40×48 11T*



*Galvanized Heavy Duty Pallets 74×48 11T*



*Galvanized Heavy Duty Pallets 42×42 11T*



*Galvanized Heavy Duty Pallets 66×66 13T*



*Galvanized Heavy Duty Pallets 66×66 13T*



*Galvanized Heavy Duty Pallets 66×66 13T*



# HEAVY DUTY FOLDABLE WIRE CONTAINER

*External size: 1200\*1000\*930 mm*

*Internal size: 1120\*920\*700 mm*

*Loading capacity: 1500kg*

*Customized acceptable*



# HEAVY DUTY FOLDABLE WIRE CONTAINER



*External size: 1600\*1150\*1075 mm*

*Internal size: 1525\*1070\*830 mm*

*Loading capacity: 1500kg*

*Customized acceptable*



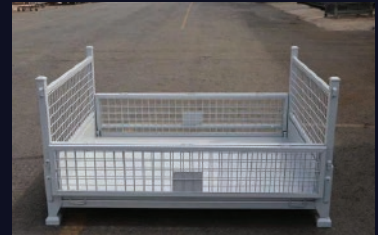


*External size: 1200\*800\*809 mm*  
*Internal size: 1200\*1000\*809 mm*  
*Loading capacity: 1000kg*  
*Customized acceptable*



# THE PALLET CAGE

# FOLDING METAL BOX



# FOLDING METAL BOX



# FOLDING METAL BOX



# FOLDING METAL BOX





# FOLDING METAL BOX



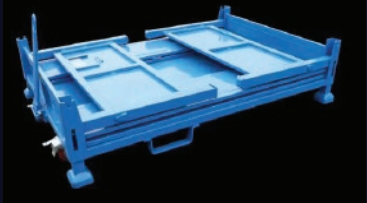
# STACKABLE METAL BOX



# FOLDING METAL BOX



# FOLDING METAL BOX



# CONTACT US:

**Phone:** +1(416)835-3444  
+1(204) 361-6015  
+1(647)895-2725

**Email:** [info@steelworksexpert.com](mailto:info@steelworksexpert.com)

## STEEL WORKS EXPERT

### **Office Address:**

*379 Stephen Street Morden Manitoba  
R6N 0G8, Canada.*

### **Factory Address:**

*#420 9th Street South Morden Manitoba  
R6M 0C3, Canada.*

*[www.steelworksexpert.com](http://www.steelworksexpert.com)*